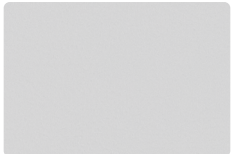
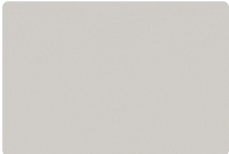


PS-007  
Snow

PS-004  
Water



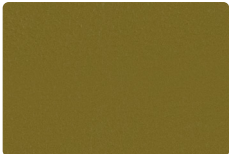
PS-017  
Glacier



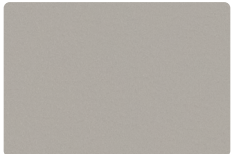
PS-027  
Alabaster



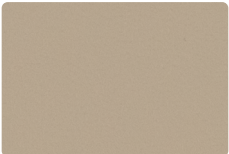
PS-047  
Wheat



PS-003  
Celery



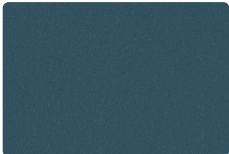
PS-006  
Pumice



PS-037  
Sand



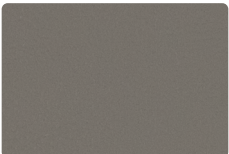
PS-009  
Tangerine



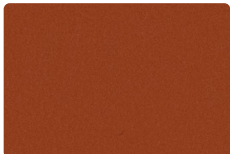
PS-014  
Ocean



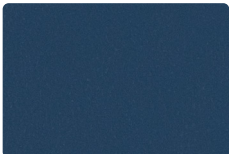
PS-016  
Tin



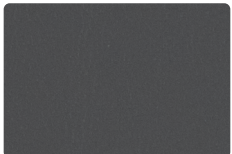
PS-026  
Flint



PS-019  
Turmeric



PS-024  
Marine



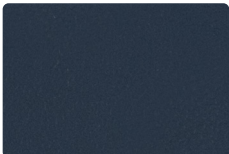
PS-036  
Steel



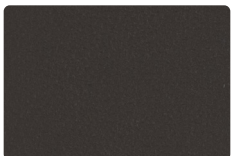
PS-000  
Coffee



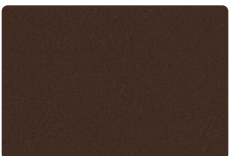
PS-001  
Sangria



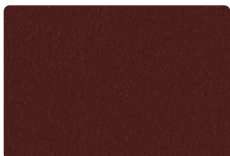
PS-034  
Indigo



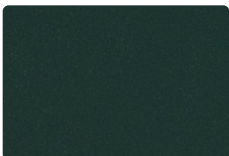
PS-046  
Hearth



PS-010  
Chocolate



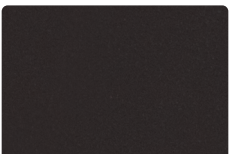
PS-011  
Brick



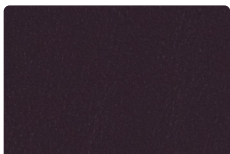
PS-013  
Spruce



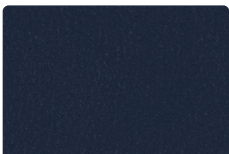
PS-056  
Night



PS-020  
Mahogany



PS-005  
Regal



PS-044  
Navy

Upholstery  
43% Polyurethane Polycarbonate  
face, 57% Polyester backing  
54 inches / 137 cm  
Exceeds 250,000 Double Rubs  
WRITE AWAY® - Soil & Stain  
Resistant Top Coat with Ink  
Resistant Technology  
GREENGUARD Certified

**TECHNICAL INFORMATION**

Application: Upholstery

Content: 43% Polyurethane Polycarbonate face, 57% Polyester backing

Weight: 25.4 oz./linear yard / 787.49 g/lm

Width: 54 inches / 137 cm

Finish: WRITE AWAY® - Soil & Stain Resistant Top Coat with Ink Resistant Technology

Directional: No

Shown Railroaded: No

**PERFORMANCE** 

Abrasion: Exceeds 250,000 Double Rubs  
(Wyzenbeek/Cotton Duck)

Abrasion test results exceeding ACT Performance Guidelines are not an indicator of product lifespan. Multiple factors affect durability and appearance retention.

Crocking: Dry: Grade 5 / Wet: Grade 5

Colorfastness to Light: Grade 4.5 at 200 hours

Hydrolysis Resistance: 10 weeks

**FLAMMABILITY**

California Technical Bulletin 117-2013  
NFPA 260/UFAC Class 1

**REDUCED ENVIRONMENTAL IMPACT**

This product is GREENGUARD Certified for low chemical and particle emissions to UL standard UL 2818 and may contribute to LEED certification. For complete information visit [mayerfabrics.com](http://mayerfabrics.com).

No FR Additives    No Antimicrobial/Antibacterial Additives    PFAS Free

**CLEANING INFORMATION**

WS: Water/Solvent Cleaner

BC: Bleach Cleanable –

1 part bleach, 9 parts water = 10% bleach, 90% water solution.

CFC: Coated Fabrics Cleaning – Refer to Mayer website for complete cleaning info.

**DYE TRANSFER DISCLAIMER**

Certain clothing and accessory dyes (such as those used on denim jeans) may migrate to lighter colors. This phenomenon is increased by humidity and temperature and is irreversible. Mayer Fabrics will not assume responsibility for dye transfer caused by external contaminants. Please check compatibility when using this product in combination with painted or varnished surfaces.

**ADDITIONAL INFORMATION**

Custom Colors: All patterns can be custom colored. Minimum yardage applies.  
Warranty: Please refer to the Mayer website for warranty information by pattern.  
Digital Swatch Card Color Matching: Due to color variations on different monitors and color printers, actual swatch colors may vary slightly. Please request a memo sample from Mayer Fabrics to ensure proper color representation.  
Complete and current product information available at [mayerfabrics.com](http://mayerfabrics.com).



# MAYER FABRICS

